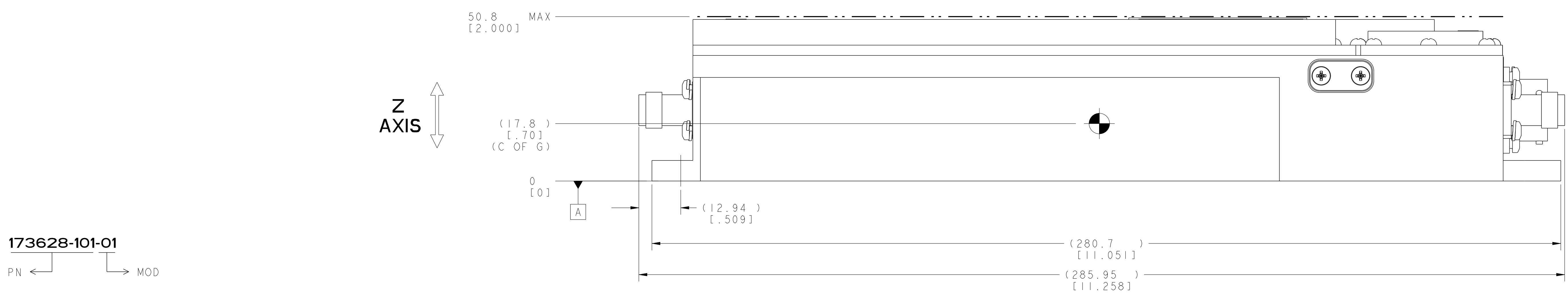
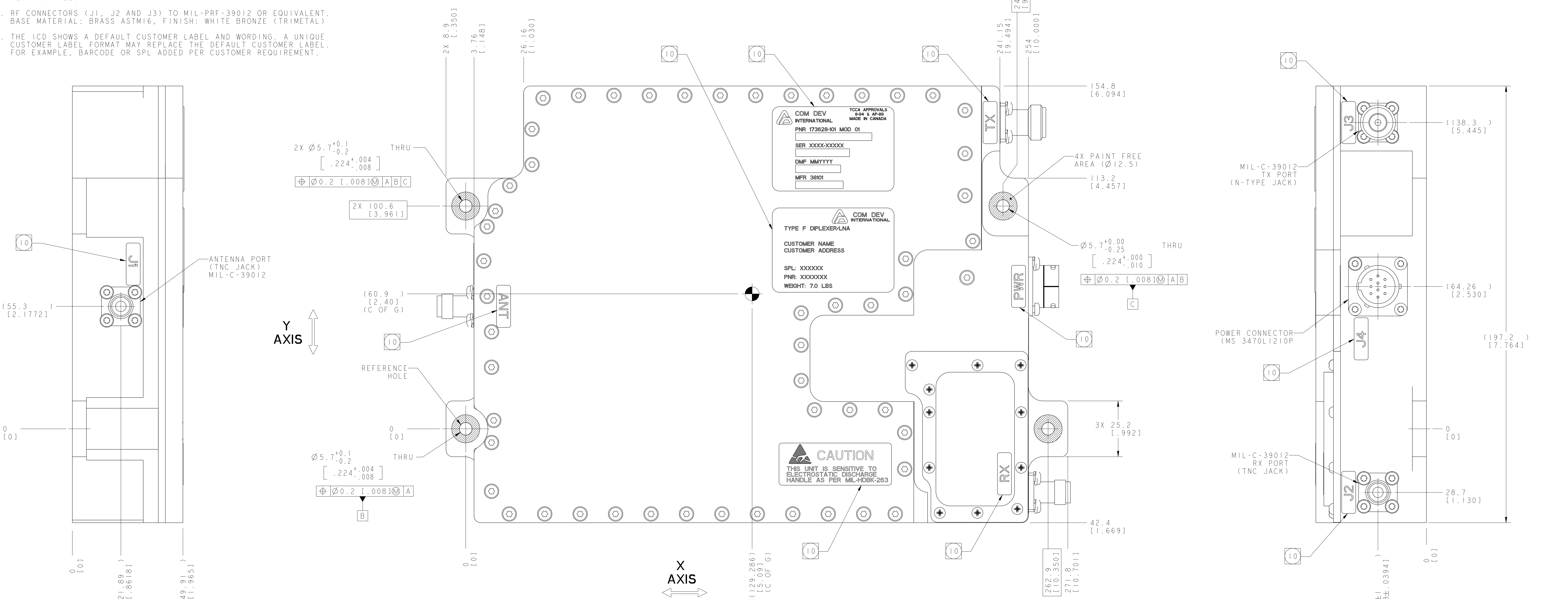


- NOTES: UNLESS OTHERWISE SPECIFIED
- RECOMMENDED TORQUE FOR THREADED RF CONNECTORS (in.lb):
 ANT (TNC J1) 8 ±1
 RX (TNC J2) 8 ±1
 TX (N TYPE J3) 10 ±1
 - RECOMMENDED TORQUE FOR STAINLESS STEEL MOUNTING HARDWARE (in.lb):
 MOUNTING SCREWS IN ALUMINUM ALLOY.
 5mm MINIMUM THREAD ENGAGEMENT:
 #10-32 UNC 34 ±6
 - CAUTION: AC AND DC POWER SYSTEM MUST NOT BE OPERATED SIMULTANEOUSLY
 - RF POWER DISSIPATION (WATTS): 13.5 MAXIMUM
 - BITE LEVELS (VOLTS): OPERATIONAL 15 TO 36
 FAILURE 1 MAXIMUM
 - FINISH: MIL-PRF-85285 TYPE 1, POLYURETHANE #37038, CAMMOUFLAGE BLACK
 - DIMENSIONS ARE IN mm/[inches]
 - TOLERANCE: ±0.5/[.020]
 - WEIGHT ([lb]/Kg): [7.0]/3.18 MAXIMUM, [6.8]/3.08 NOMINAL
 - MARKING AND IDENTIFICATION SHOWN IN APPROXIMATE AREAS
 - DUST COVERS NOT SHOWN
 - MOUNTING LOCATION SURFACE FINISH:
 SILVER PLATE PER ASTM B700, .00015Ag OVER .00015 Ni
 - MOUNTING LOCATION BASE MATERIAL: ALUMINUM ALLOY 6061-T6 OR
 ALUMINUM ALLOY 6061-T6511
 - RF CONNECTORS (J1, J2 AND J3) TO MIL-PRF-39012 OR EQUIVALENT.
 BASE MATERIAL: BRASS ASTM16, FINISH: WHITE BRONZE (TRIMETAL)
 - THE ICD SHOWS A DEFAULT CUSTOMER LABEL AND WORDING. A UNIQUE
 CUSTOMER LABEL FORMAT MAY REPLACE THE DEFAULT CUSTOMER LABEL.
 FOR EXAMPLE, BARCODE OR SPL ADDED PER CUSTOMER REQUIREMENT.

| POWER CONSUMPTION | |
|-------------------|-------------------|
| VOLTAGE SOURCE | CURRENT |
| 115 VAC, 400 Hz | 100mA RMS MAXIMUM |
| +28 VDC | 150 mA MAXIMUM |

| J4 POWER CONNECTOR | |
|--------------------|-------------------------|
| PIN | DESIGNATION |
| A | GROUND |
| B | LNA ON/OFF CONTROL |
| C | --- |
| D | --- |
| E | 115 VAC, 400 Hz COLD |
| F | 115 VAC, 400 Hz HOT |
| G | +28 VDC HOT |
| H | LNA BITE |
| J | LNA BITE/CONTROL GROUND |
| K | +28 VDC RETURN |



STATIC SENSITIVE DEVICE
 HANDLE PER CWI 7.5.012.01
 AVSAT CLASS B, CSI 8510 & CSI 8513

INTERFACE CONTROL DRAWING

| ANGULAR DIMENSIONS | ° | MM | INCH | UNLESS OTHERWISE NOTED, DIMENSIONS ARE IN INCHES - MM ARE IN SQUARE BRACKETS, AND TOLERANCES APPLY AS SHOWN BELOW | FIRST USED ON | ICD OR OUTLINE NO. |
|--|-----------|--------|-------|---|---------------|--------------------|
| ALL ANGLES | ±1° | ±.05 | ±.001 | | REF ASST | DRAWING TYPE |
| SURFACE FINISH | MICROINCH | MICRON | | | ICD | |
| ROUNDEDNESS | R | R | | | | |
| UNTOLERANCED DIMENSIONS LOCATING THE POSITION ARE BASIC | | | | | | |
| UNTOLERANCED DIMENSIONS LOCATING THE POSITION ARE BASIC | | | | | | |
| INTERPRET DIMENSIONS AND TOLERANCES PER ASME Y14.5M-1994 | | | | | | |
| THE INFORMATION CONTAINED HEREIN IS APPROPRIATE TO THE DESIGN AND IS TO BE USED BY THE RECIPIENT ONLY. IT SHALL NOT BE REPRODUCED, COPIED, OR TRANSMITTED IN ANY FORM OR BY ANY MEANS WITHOUT THE WRITTEN PERMISSION OF COM DEV. | | | | | | |
| PROJECTION | | | | | | |

| REV | DESCRIPTION | ECN NO. | IMPL BY | APVD BY | DATE |
|-----|-------------|---------|---------|---------|--------|
| J | | 8018247 | GWU | MM | 200608 |
| H | | 8018069 | GWU | MM | 200525 |
| G | | 8017967 | GWU | MM | 200515 |
| F | | 97368 | KBV | KBV | 130107 |
| E | | 95007 | LJH | KBV | 120605 |
| D | | 94566 | GJG | KBV | 120420 |
| C | | 91394 | KBV | KBV | 110707 |
| B | | 77932 | KBV | LJH | 080611 |
| A | | 76997 | KBV | LJH | 080331 |

REVISIONS

155 SHELDON DRIVE
 CAMBRIDGE, ONTARIO
 CANADA N1R 7H6

COM DEV
DIPLEXER/LNA, L-BAND, TYPE F

173628-01-01 ICD-AVS-173628 J

SIZE: TSCH NO: E 38101
 SCALE: 1:500 WEIGHT: SEE NOTES SHEET 1 OF 1

| 173628-01-01 | | |
|--------------|------------------------------|-----|
| PN | MOD | |
| 173628-01-01 | L BAND, DIPLEXER/LNA, TYPE F | 01 |
| COM DEV PN | DESCRIPTION | MOD |

PRODUCTION - Released - 10 Jun 2020 15:20:48 UTC